

**TERM OF REFERENCE**  
**SOCIO-ECONOMIC SURVEY IN TWO COMMUNITIES**  
**IN TENASSERIM CORRIDOR**

*Socio-economic Baseline Study Focused on Livelihoods of Two Engaged Communities  
Located in Tenasserim Corridor*

**Supervised by:** On-iriya Fugthaworn

**Duration:** 1 May 2024 – 30 September 2024

**Major Responsibilities**

The Research Consultant/s will conduct a socio-economic profile for 2 different representative villages located in Tenasserim Corridor. The profile will be to gather socio-economic baseline data before interventions which will serve as benchmark for monitoring project impact at the end of the project as well as provide information to WWF Thailand in developing further its action plan to support livelihood activities and community-based conservation work in the landscape.

**Background**

Conduct with trained community enumerators as required, a socio-economic survey of households in selected villages located in Tenasserim corridor using individual household surveys, primary and secondary analysis, and focused group discussions as tools. The results of the socio-economic survey will inform the project on opportunities and improvement of communities' incomes and livelihoods that support sustainable management of forests and the immediate environment. Such profiles will also serve as benchmark for monitoring project impact at the end of the project as well as provide information to WWF Thailand in developing further its action plan to support livelihood activities and community-based conservation work in the landscape. The consultant will then use the household survey results to prepare the socioeconomic profile of Tako Pidthong and Baan Phapok in Tambon Suan Phueng, Suan Phueng District, Ratchaburi through analysis of the findings, identify data gaps, and provide practical and actionable recommendations in moving forward the community engagement and sustainable livelihood development work that supports for conservation.

**Work location**

Tako Pidthong and Baan Phapok in Tambon Suan Phueng, Suan Phueng District, Ratchaburi

**Scope of Work**

1. Review primary and secondary data, existing database, and reports on the socioeconomic background of two key communities in the Tenasserim Corridor;
  - 1.1. Population fundamental data i.e. gender, age, age, education level, marital status, household status, number of household members, domicile and migration, household income, main occupation, and extra occupation.
2. Acknowledgment, participatory experience, opinions and attitudes, and natural resources dependency, needs of the communities to participate in the natural resources conservation

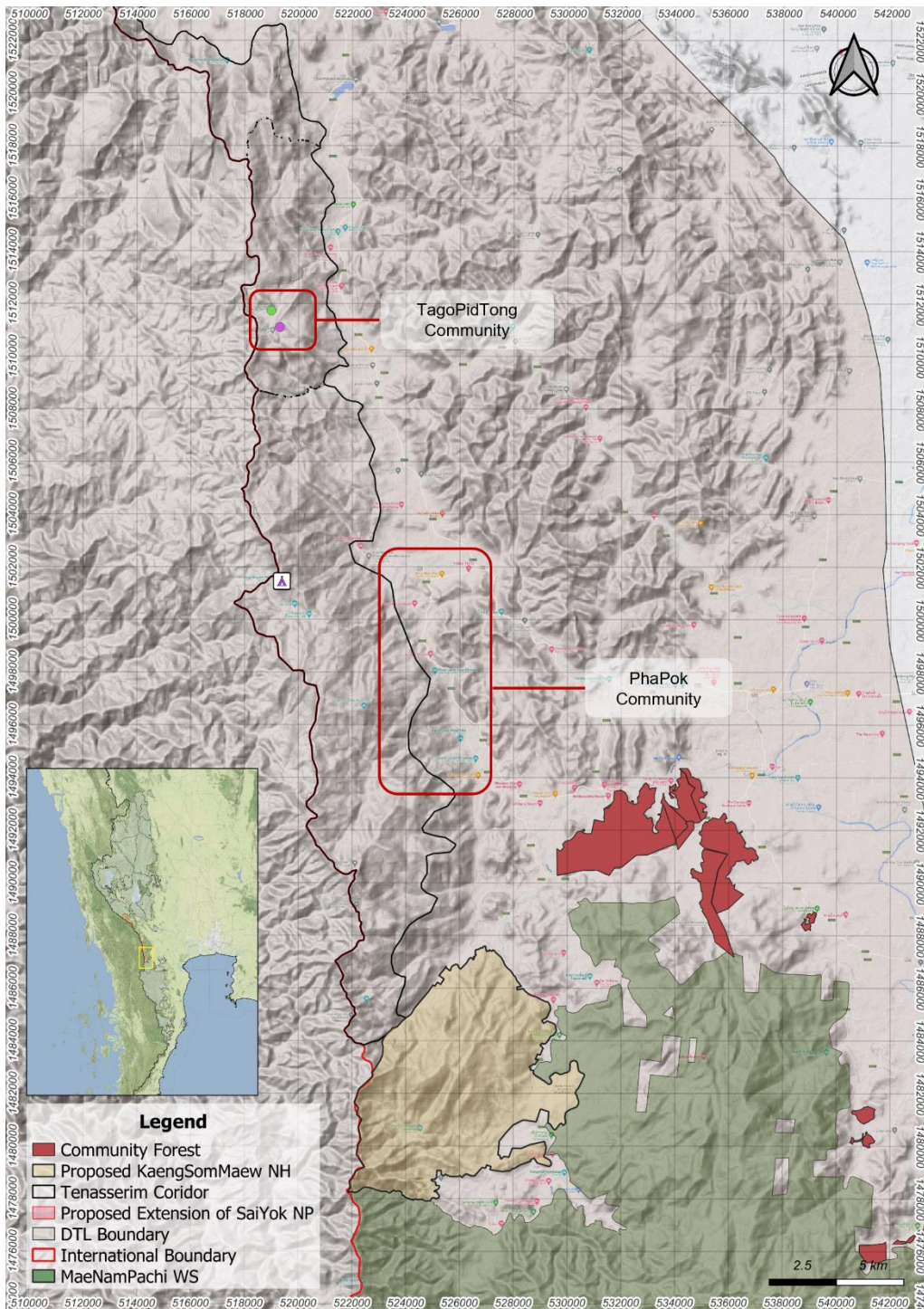
including willingness to cooperate with NGOs and local authorities in improving livelihoods with an increased commitment to support conservation approaches

- 2.1. Perception of the importance, opinions and attitudes towards natural resources.
- 2.2. Experience in participating in natural resource conservation.
- 2.3. Needs of communities participating in natural resource conservation.
- 2.4. Willingness to cooperate with NGOs and local authorities in improving livelihoods with an increased commitment to support conservation approaches
- 2.5. Barriers and conditions of natural resources conservation
3. Conduct socio-economic surveys along with WWF staff and concerned parties as appropriate in target sites and households
4. Data analysis of the socio-economic surveys and formulate conclusions and recommendations for improving the socio-economic condition in those communities.
5. Prepare and consolidate all the socioeconomic baseline profile for supported communities based on the result of this study, and the other studies conducted by other organizations.
6. Submit an outline of the report and finalize in close coordination with WWF staff.
7. Submit draft report to WWF and finalize based on feedback from WWF, local communities, and other relevant partners of WWF (e.g. donor, partner agency)

### **Output/deliverable of performance and time schedule**

The consultant will be expected to produce:

1. Socio-economic profiles outline (to be approved by WWF) on or before 31<sup>st</sup> July 2024.
2. 1 socio-economic profile report with recommended incomes and livelihoods improvement of two communities in Tenasserim Corridor. The final report will be delivered on or before 15 September 2024.



Map of two target communities